

A stylized landscape illustration featuring a dark green background. In the foreground, there are several layers of jagged, mountain-like shapes in shades of blue and grey, creating a sense of depth. On the left side, a rainbow with multiple bands of color (red, orange, yellow, green, blue, purple) is partially visible, appearing to rise behind the mountains. The overall aesthetic is clean and modern.

# Introduction to WildFly and how to get started *fast*

# About me



- ▶ Principal Software Engineer at Red Hat
- ▶ Joined the WildFly team in 2012
- ▶ Work on management capabilities of WildFly
- ▶ Management console lead (HAL)

# Agenda



- ▶ Introduction to WildFly
- ▶ How to get started
- ▶ How to get involved
- ▶ Q&A



What do I get?

What do I get?



*"A **powerful, modular, & lightweight** application server that helps you **build** amazing applications."*

# Modular



- ▶ JBoss Modules
- ▶ Profiles and subsystems
- ▶ Layers, features and feature packs

# Powerful



- ▶ Management model
- ▶ Management interface
  - XML
  - CLI
  - Console
  - YAML

- REST API
- Java API
- JMX

# Configuration / XML



```
<server xmlns="urn:jboss:domain:20.0">
  <profile>
    <subsystem xmlns="urn:jboss:domain:logging:8.0">
      <console-handler name="CONSOLE">
        <level name="DEBUG"/>
        <formatter>
          <named-formatter name="COLOR-PATTERN"/>
        </formatter>
      </console-handler>
    </subsystem>
  </profile>
</server>
```

XML



# Configuration / CLI



CLI

```
[standalone@localhost:9990 /]
/subsystem=logging/console-handler=CONSOLE:write-attribute(name=level,value=DEBUG)
{"outcome" => "success"}
```

```
[standalone@localhost:9990 /]
/subsystem=logging/console-handler=CONSOLE:read-resource
{
  "outcome" => "success",
  "result" => {
    ...
    "level" => "DEBUG",
    ...
  }
}
```

# Configuration / Console



## Console Handler

Defines a handler which writes to the console.

Showing 1 to 1 of 1 entries Add Remove

Name ^	Level	Target
CONSOLE	DEBUG	System.out

« < 1 of 1 > »

[Help](#)

Autoflush  ON

Enabled  ON

Encoding

Filter Spec

Formatter

Level

Named Formatter

Target

Cancel Save

# Configuration / YAML



```
wildfly-configuration:  
  subsystem:  
    logging:  
      console-handler:  
        CONSOLE:  
          level: DEBUG
```

YAML

```
> ./standalone.sh -c standalone-full.xml -y=some.yml:another.yml
```

SHELL

# Configuration / REST



```
> curl ... \  
  "http://.../management/subsystem/logging/console-handler/CONSOLE?operation=resource"  
  
{  
  ...  
  "level": "DEBUG",  
  ...  
}
```

SHELL

# Lightweight

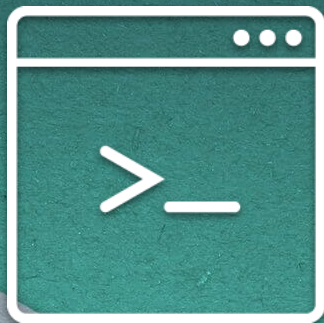


- ▶ "Just enough app server"
- ▶ Fast startup
- ▶ Low memory
- ▶ Stateless management interface

# Standard based

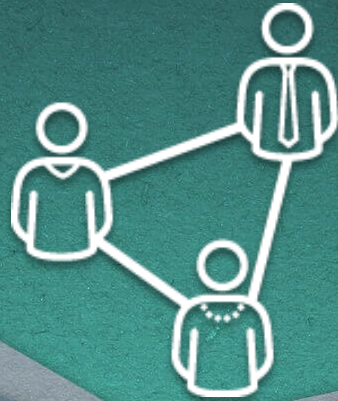
- ▶ Java SE 11, **17**, 21
- ▶ Jakarta EE 10
- ▶ Eclipse MicroProfile 6.1





Demo

[wildfly.org/get-started](https://wildfly.org/get-started)



Get involved



# Get Involved



- ▶ Get the code on [github.com/wildfly/wildfly](https://github.com/wildfly/wildfly)
- ▶ Start [hacking on WildFly](#)
- ▶ Find [good first issues](#)
- ▶ Join the discussions on the [WildFly Google group](#), or chat with us on the Zulip [wildfly-user](#), and [wildfly-developer](#) channels